



**NOAA  
FISHERIES**



# Enforcement Updates

Gulf Council Fishery Management Meeting  
Mobile, AL. April 2026  
Compliance Liaison Matt Walia





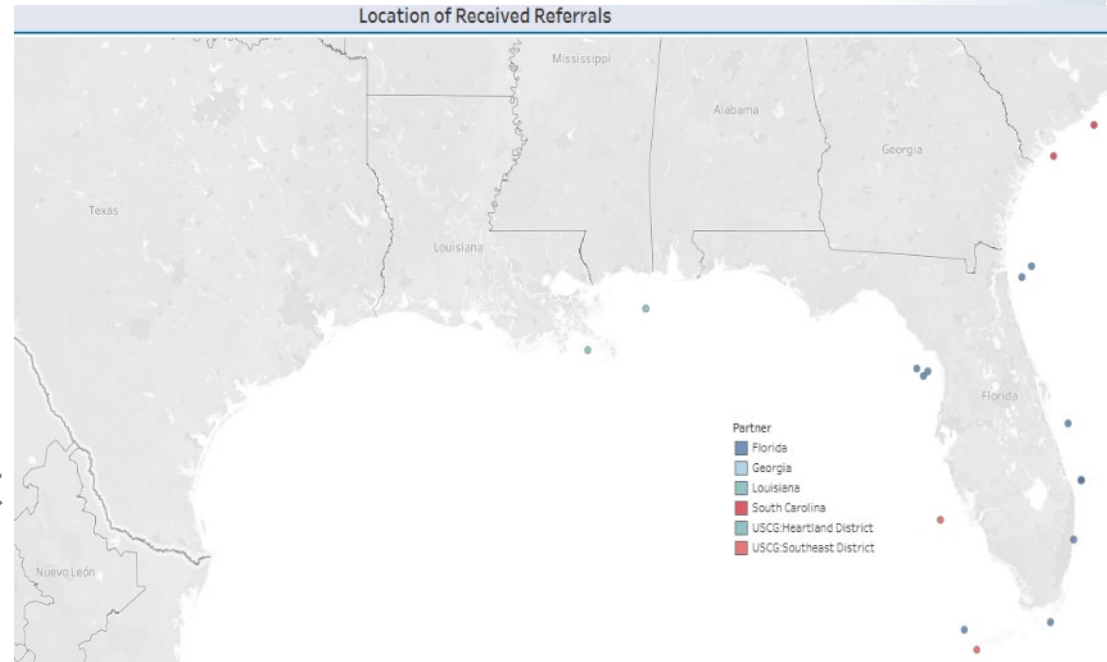
# Enforcement Referrals

## GFMC Enforcement Partners



**27 Overall Enforcement Referrals (OCT-DEC)**

- Encompasses entire SED
- Within GFMC:
  - 19 FWC, 1 LDWF, 2 USCG





# Protected Resources

## Outreach

- Strandings
- Signage



## Shrimper

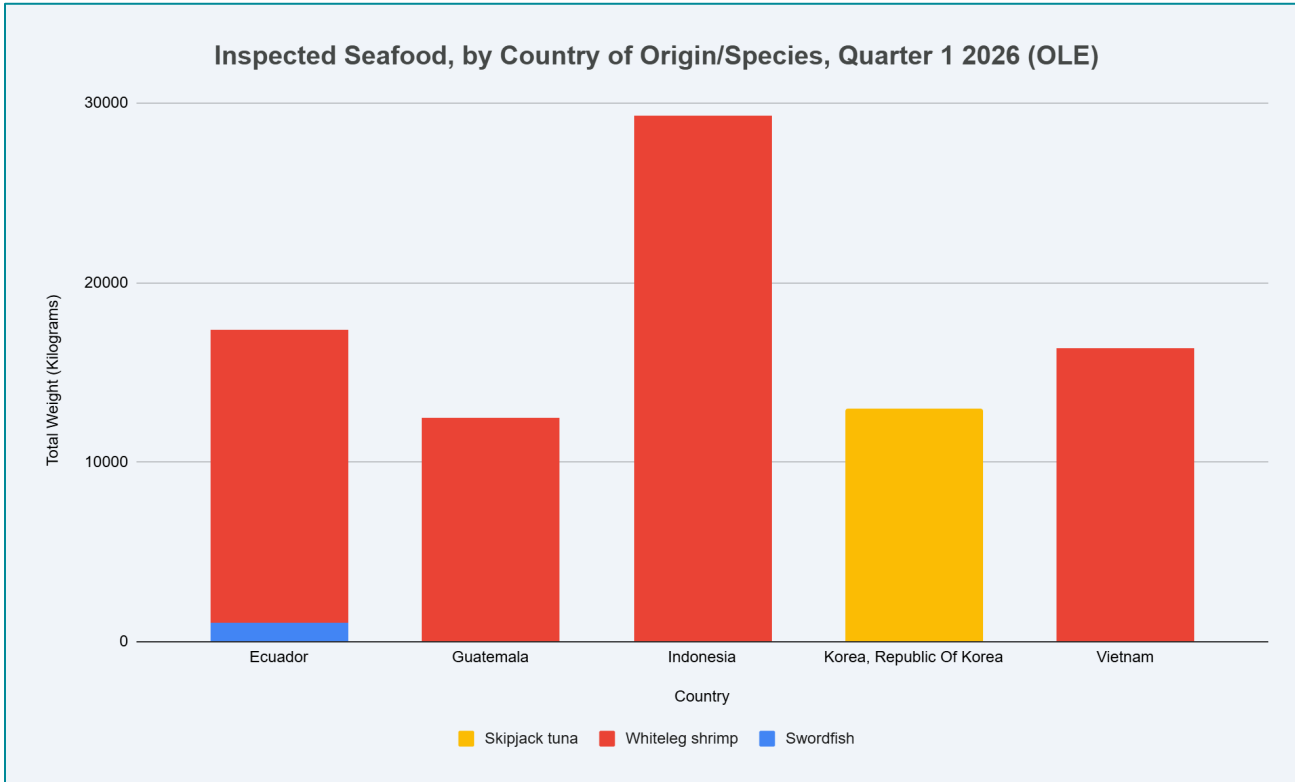
- Sewn TEDs
- Uncooperative
- Officers removed modification



**NOAA**  
FISHERIES



# Illegal Unreported Unregulated Enforcement



**Featured News**

**FEATURE STORY**

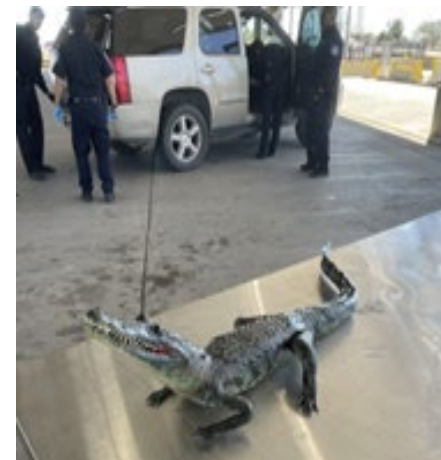
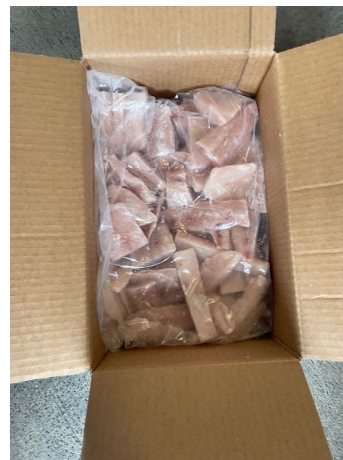
**NOAA Fisheries Halts and Removes Illegal Tuna Imports From United States**





# International Trade Monitoring

- Seafood Import Monitoring Program (SIMP) 2018-Present
- Reporting and Traceability requirements-can get revoked



## Major Ports/Borders in Southeast OLE-led training and enforcement





# REMINDERS

## Federal Snapper For-Hire Season

- **OPEN June 1**
- Be aware of state boundaries
- Not allowed in federal waters over Memorial Day

## VMS Compliance

- Trip Declarations
- Landing Notifications
- Powerdowns on **existing** vessels only
- New HMS set reports





# Report A Violation

NOAA's Law Enforcement Hotline,  
available 24/7 at  
**(800) 853-1964**

- Location, time, and date of the activity.
- Description of the activity.
- Name(s) of the vessel, owner/operator, captain, crew, or additional witnesses.



**NOAA**  
**FISHERIES**

# QUESTIONS



**NOAA**  
FISHERIES