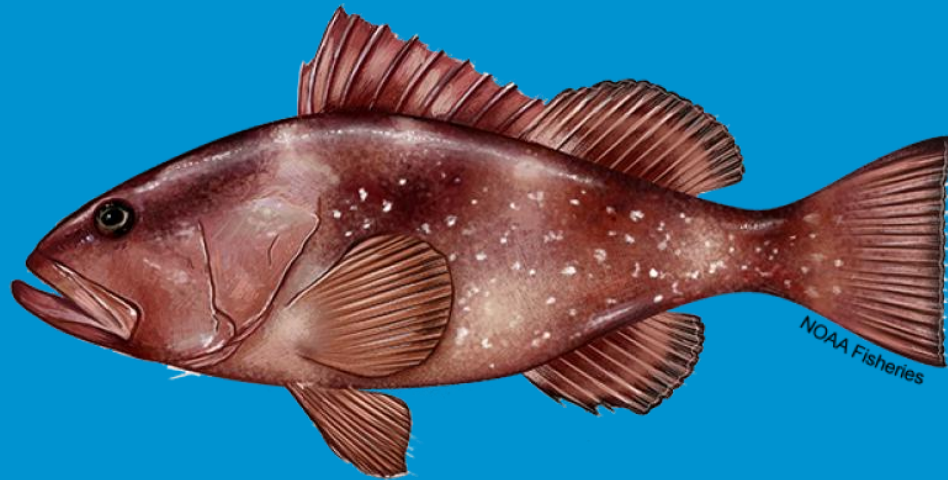




**NOAA  
FISHERIES**

SEFSC

Gulf Fisheries Branch



# SEDAR 88: Gulf Red Grouper 2026 Interim Analysis

Gulf Fishery Management Council  
Scientific and Statistical Committee

January 22, 2026

# Recent Interim Analyses

**2021:** Catch advice adjusted using index-based harvest control rule (HCR) and 3-year moving average of NMFS bottom longline survey index of abundance

- **Framework Action set ABC = 4.96 million pounds gutted weight (mp gw)**

**2022:** Used as a health check, not used to adjust catch advice

**2023:** Updated catch advice proposed but **not adjusted**, largely because of the increase time since the last assessment

**2024:** Health check requested via updating available fishery-independent indices of relative abundance, catch advice **not adjusted**

**2025:** SEDAR88



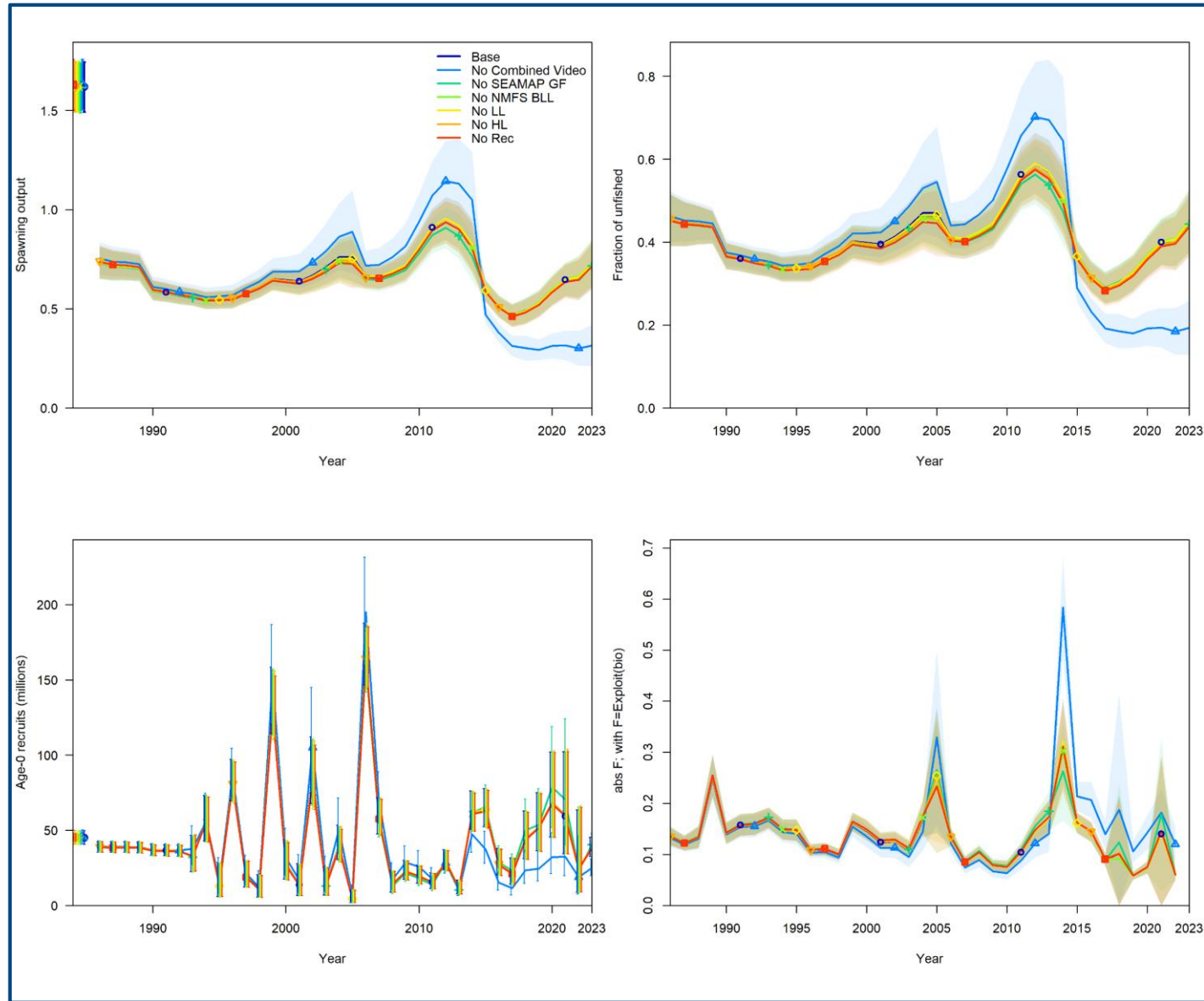
# 2026 interim analysis

- Terminal year of SEDAR88: 2022
- Health check requested via updating available G-FISHER
  - Previous health check used:
    - Bottom Longline Survey
    - Groundfish Survey (selects younger age classes)



# Jack-knife (from S88)

- Purpose: determine which index or indices were most influential on derived quantities
- Removal of Combined Video Index has strong effect on time series trends

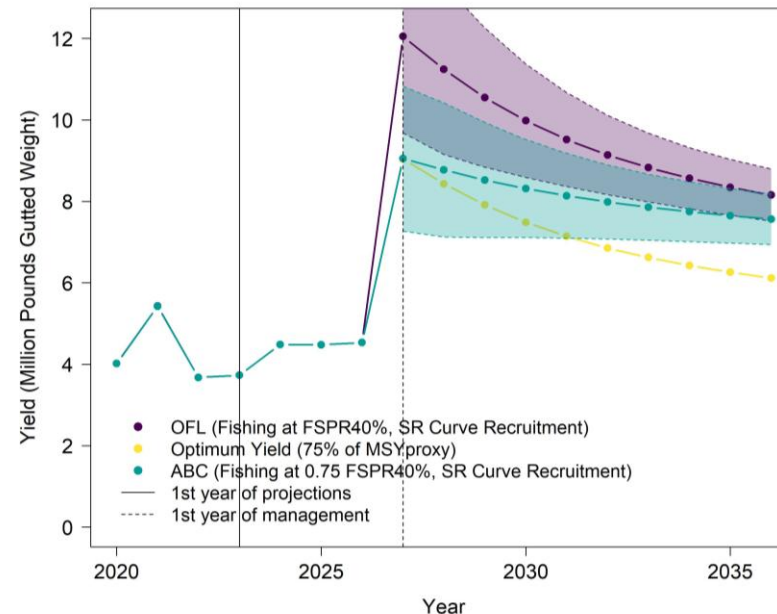


# ABC Projections: $F=0.75 * F_{40\%SPR}$ (from SEDAR88)

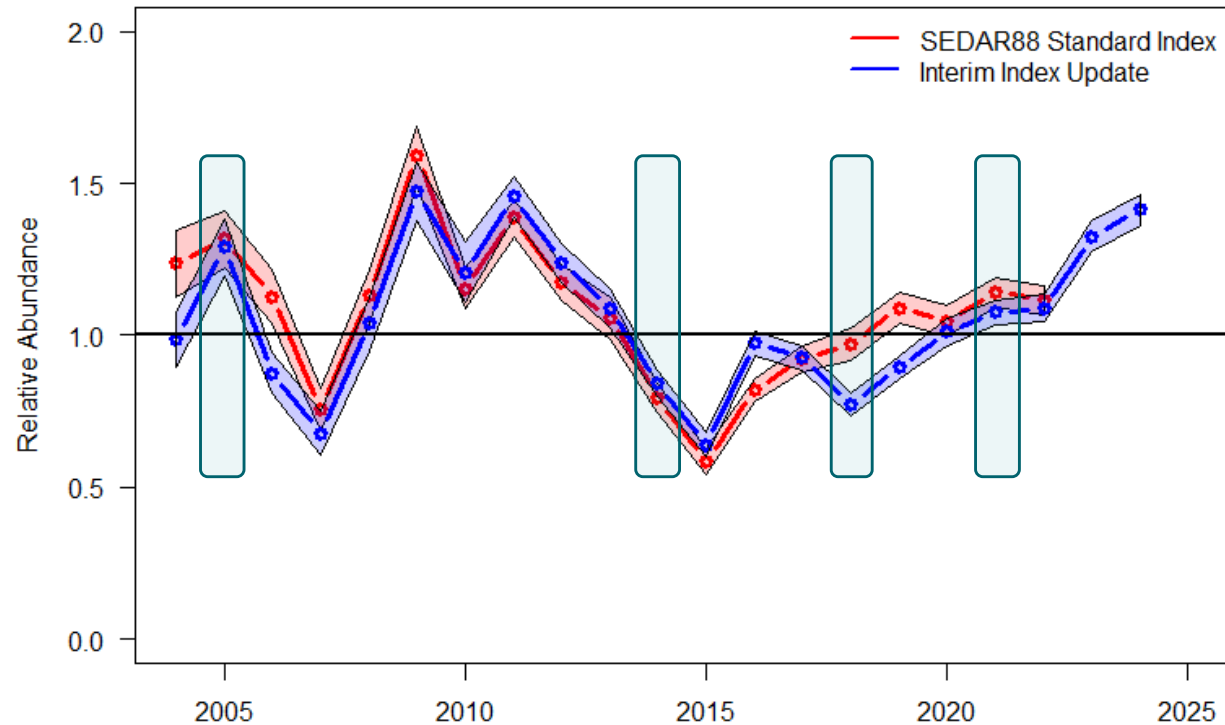
Year	Recr	F	F/ $F_{40\%SPR}$	SSB	SSB/ $SSB_{40\%SPR}$	SSB/MSST	SSB ratio	Yield
2027	41306.6	0.117	0.75	961572	1.906	3.812	0.594	9.049
2028	40999.9	0.117	0.75	926645	1.837	3.674	0.573	8.773
2029	40649.4	0.117	0.75	889150	1.763	3.525	0.549	8.524
2030	40307.1	0.117	0.75	854783	1.695	3.389	0.528	8.316
2031	39999.7	0.117	0.75	825662	1.637	3.274	0.51	8.138

- Assuming recruitment from stock-recruit curve throughout projections

Years	Constant Catch
Three (2027-2029)	8.78 mp gw
Five (2027-2031)	8.56 mp gw



# G-FISHER Combined Video Survey



- Lower abundance than observed in S88 index 2018 and 2019
- Increasing abundance trend from 2019 -2024
- Red tide years included in assessment model:
  - 2005, 2014, 2018 and 2021



**NOAA**  
**FISHERIES**