

# Management Areas and Boundaries on Mapping Tools

Outreach and Education Technical Committee  
Gulf Council



# History



December 2024 - O&E supported staff in exploring a path to adding management areas and boundaries to commercially available mapping tools.

- Closed areas don't sell devices.
- Hosting regulatory areas could be a liability for companies.

January 2025 - Council warned staff to have low expectations for success.

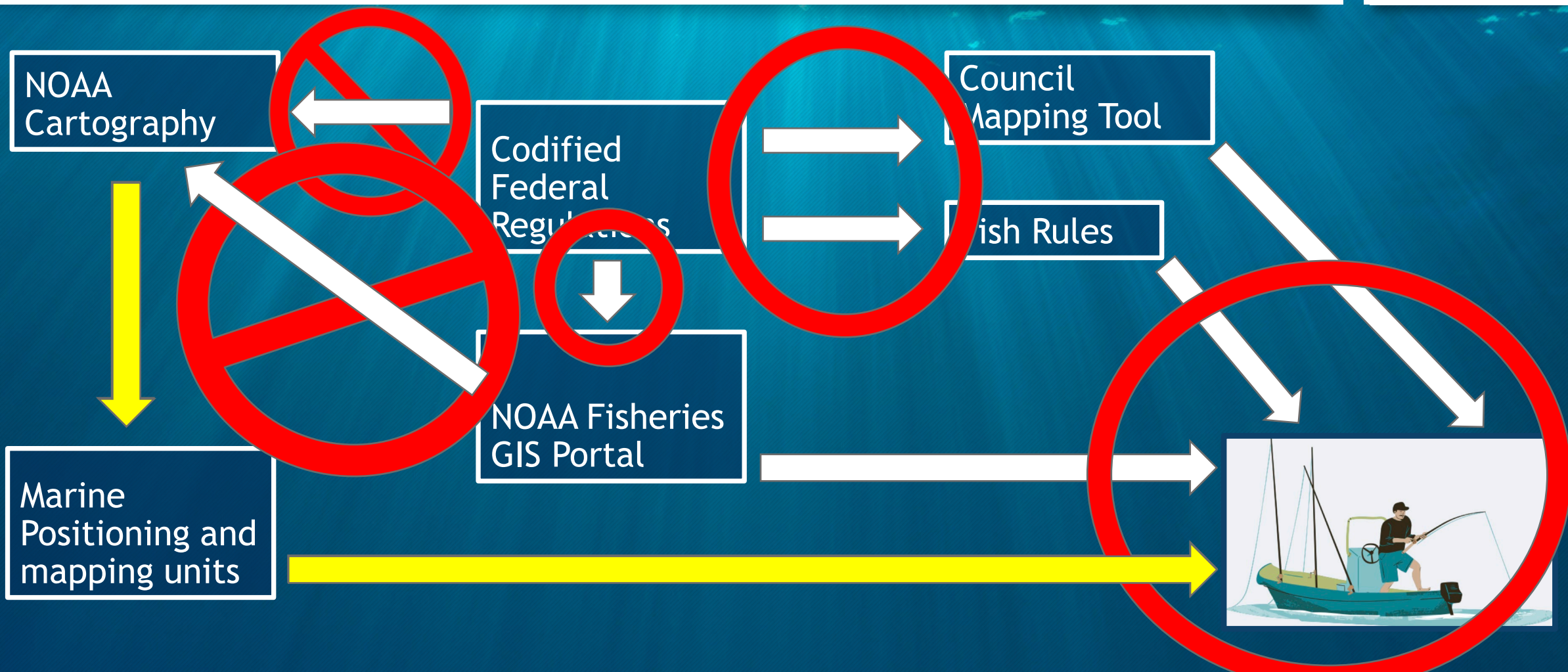
- FWC previously unsuccessful in accomplishing this goal.



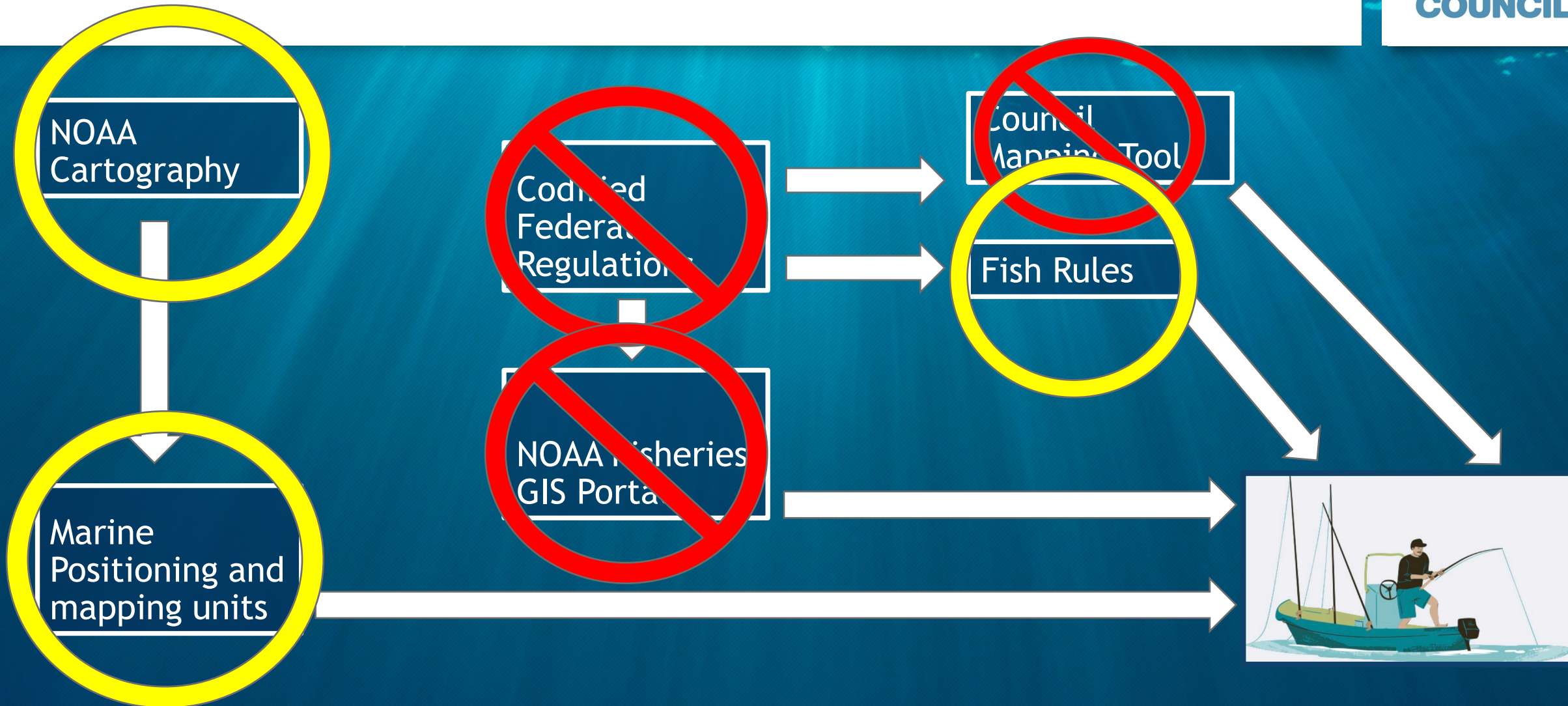


GOUPER

# Reality...



# A Case Study: 9-Mile Reef Fish Boundary



# Easy Fix..... Right?

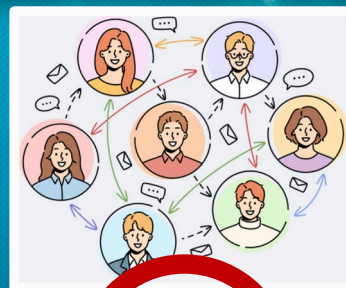


If the 9-Mile Reef Fish Boundary isn't in the CFRs, where is it?

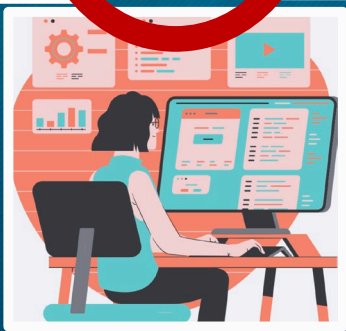
- Currently seems to be defined by each of the Gulf States although that may not be correct
  - FL/TX line shifts from Submerged Lands Act baseline to the Territorial Seas baseline
  - Rest of the Gulf states should just be based on the Territorial Seas baseline
- No Existing NOAA GIS personnel
  - Currently coordinating with NOAA LEO and SERO

Standby.....

# The Ideal Scenario....



Codified Federal Regulations → REST API



Marine Positioning and mapping units

Council Mapping Tool & Fish Rules



# How do we get there?



1. Ensure that there are sanctioned map products of all applicable regulations.
2. Gauge industry appetite for regional specific product.
3. Develop cooperative workflow to host and maintain regulations.



# Possible Next Steps



## Wait for Modernizing Access to Our Public Oceans (MAPOceans) Act

- Legislation requiring NOAA to consolidate, standardize, and digitize public data on marine waters
- Unanimously passed by the Senate (9/11/25) the House is yet to vote on it.

Or....

## Take Council Action

- Encourage NOAA to put resources towards this effort
- Embark on our own effort
  - Would require NOAA sanctioned map products
  - May require national coordination

# Feedback / Discussion

