



**NOAA  
FISHERIES**



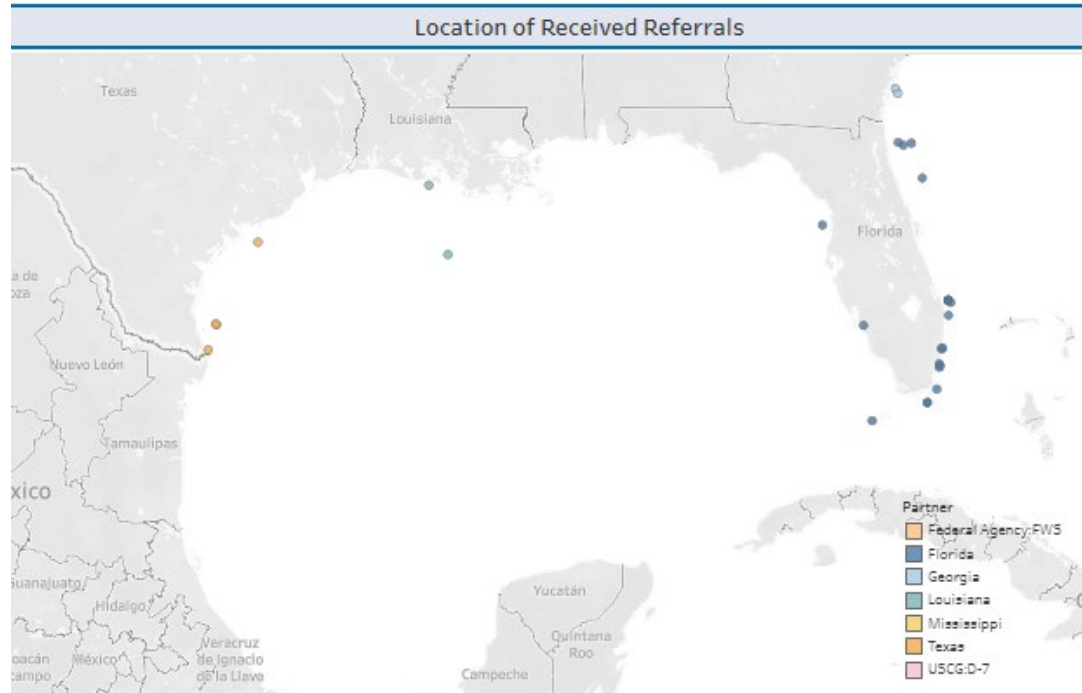
# Enforcement Updates

Gulf Council Fishery Management Meeting  
Gulf Shores, AL. April 2025



# Enforcement Partnerships & Referrals

## GMFMC Enforcement Partners



## 41 Overall Enforcement Referrals (Qtr 2)

- Encompasses entire SED
- Within GMFMC:
  - 28 FWC, 5 TPWD, 3 LDWF, 1 USCG, 1 MDMR





# IUU ENFORCEMENT

- Seafood Fraud
- Domestic Seafood Protection
- Field DNA Testing



**NOAA**  
FISHERIES



# IUU ENFORCEMENT

- Ports of Entry
- Seafood Import Monitoring Program
- Launches



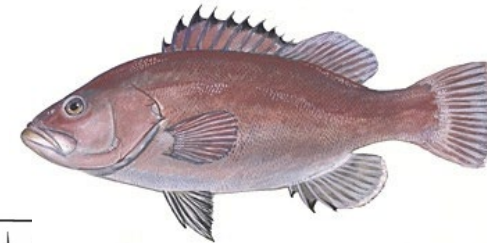
**NOAA**  
FISHERIES



# RECENT CASES

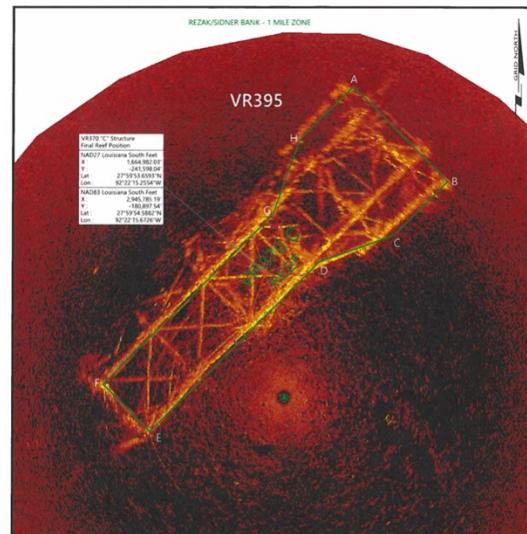
## FALSE STATEMENTS-Criminal

- Trip Reports/Ignored quotas
- Lied to LEO
- 3 day trial/3 felony convictions
- Awaiting Sentencing



## SANCTUARY

- Platform Removal/Anchoring
- Energy Company
- Outdated Boundaries



**NOAA**  
FISHERIES



# RECENT CASES

## CHARTER

- 13nm off LA
- Paid Charter Trip, Possession of Reef Fish
- Joint Patrol



## TEDs

- Angles/Bar Spacing
- Higher likelihood of turtles being killed
- JEA Referral



**NOAA**  
FISHERIES



# PROTECTED RESOURCES ENFORCEMENT

➤ Multi-Agency Training/Boardings

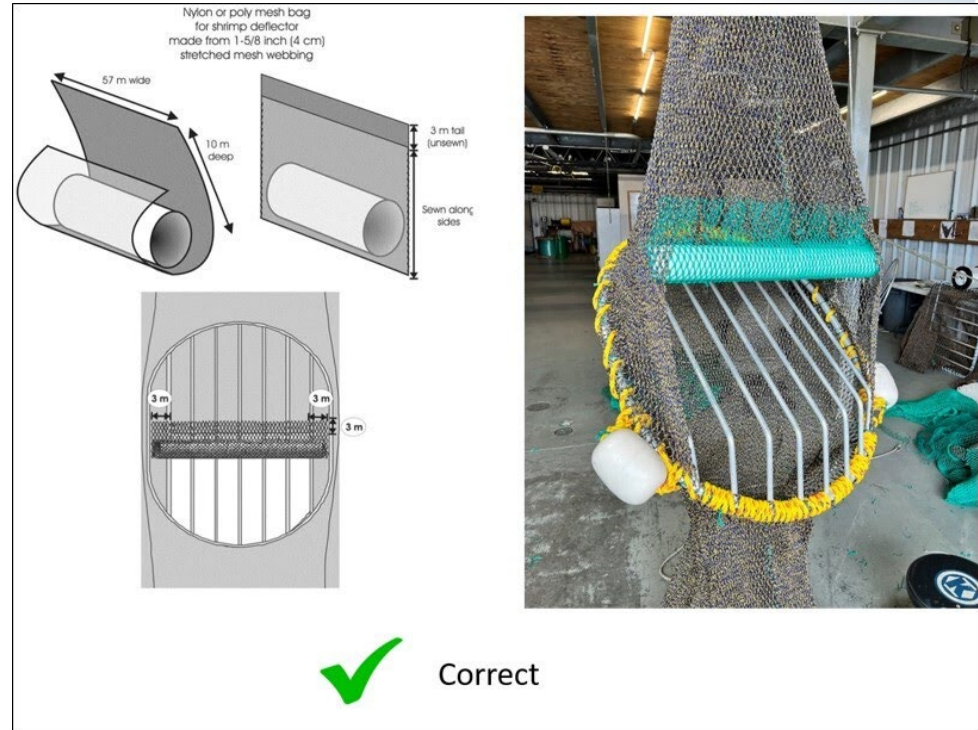


➤ Cold-Weather Events Response





# CHAUVIN INSTALLATION

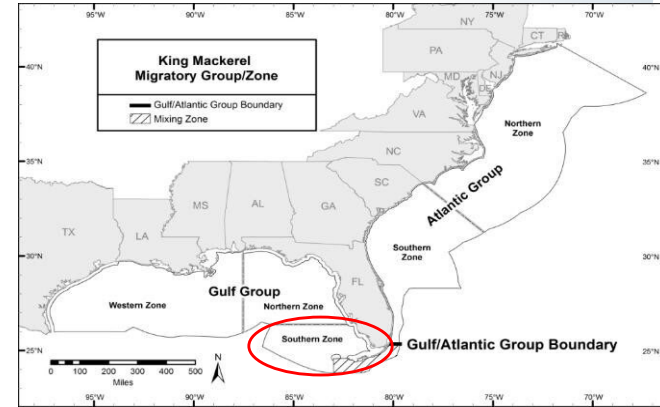




# REMINDERS

## Commercial Gillnet Closed

- Southern Zone, Through JAN 2026

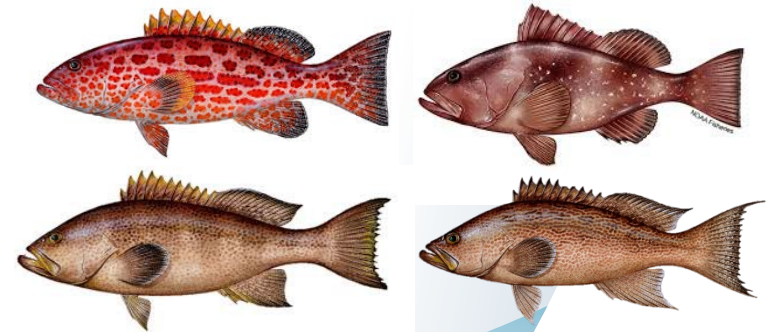


## Edges

- Closed through April except transit

## Rec Shallow Water Grouper

- Open-Follow Aggregate Bag Limit
- Gag Closed





# Report A Violation

NOAA's Law Enforcement Hotline,  
available 24/7 at  
**(800) 853-1964**

- Location, time, and date of the activity.
- Description of the activity.
- Name(s) of the vessel, owner/operator, captain, crew, or additional witnesses.



**NOAA**  
**FISHERIES**

# QUESTIONS



**NOAA**  
FISHERIES