



**NOAA
FISHERIES**



Enforcement Updates

Gulf of Mexico Fishery Management Council Meeting
New Orleans, LA. January 2025



Gulf of Mexico Snapshot

- **92** Opened Incidents
- **14** Cases referred to General Counsel/US DOJ
 - Observer Harassment
 - Sanctuary & IFQ Related
- **21** Summary Settlements (\$300-\$2000)
 - Retention During Closure
 - IFQ Program; Sanctuary
- **273** Patrols
- **21%** No Violations or Compliance Assistance



NOAA
FISHERIES



ENFORCEMENT HIGHLIGHTS

Seafood Imports

- Domestic Security
- Over 25,000 lbs seafood inspected
- \$203K +



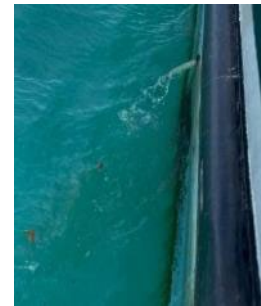
Protected Resources

- Outreach and Case Work



Sanctuary Protection

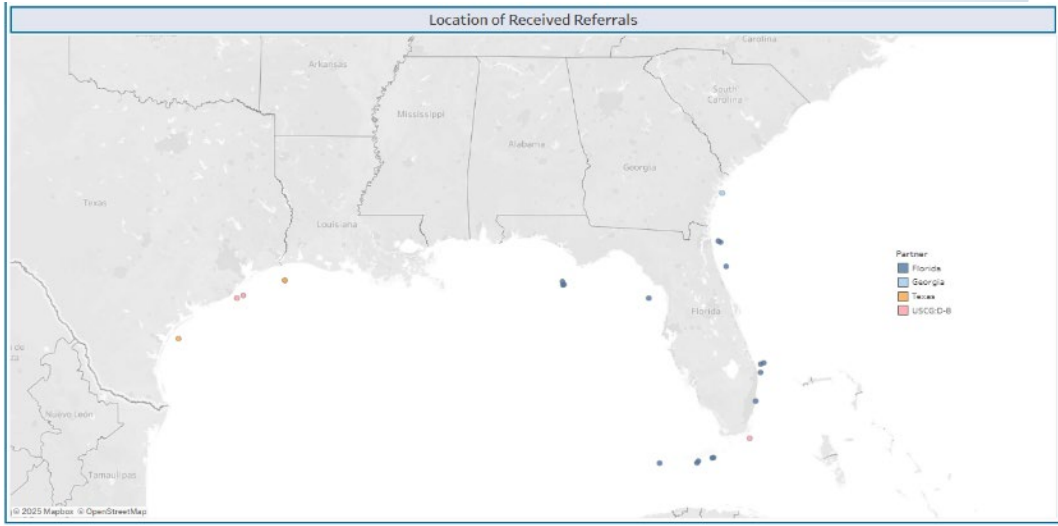
- TED Patrols
- Marine Discharge
- Anchoring
- Training





Enforcement Partnerships & Referrals

GMFMC Enforcement Partners



32 Overall Enforcement Referrals (Qtr 1)

- Encompasses entire SED
- Within GMFMC:
 - 22 FWC, 3 USCG, 5 TPWD





TARGETED OPERATIONS

Shrimpers

- Texas
- Training and Outreach
- Patrols/Inspections



Illegal Charters

- Florida and Texas
- Tournament Presence

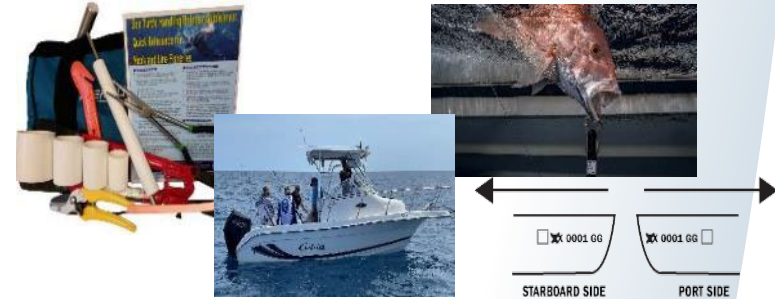




CURRENT SPOTLIGHT

Illegal Charters

- Ongoing Patrols and Operations
- Joint Agency Collaboration
- Proper ID and Gear



Commercial Focus

- IFQ landings and offloads
- Closed Areas



NOAA
FISHERIES



Report A Violation

NOAA's Law Enforcement Hotline,
available 24/7 at
(800) 853-1964

- Location, time, and date of the activity.
- Description of the activity.
- Name(s) of the vessel, owner/operator, captain, crew, or additional witnesses.



NOAA
FISHERIES

QUESTIONS



NOAA
FISHERIES